







01

INTRODUCTION

02

THE RESIDENCES

03

THE LIFESTYLE

04

THE LOCATION

05

THE DEVELOPERS



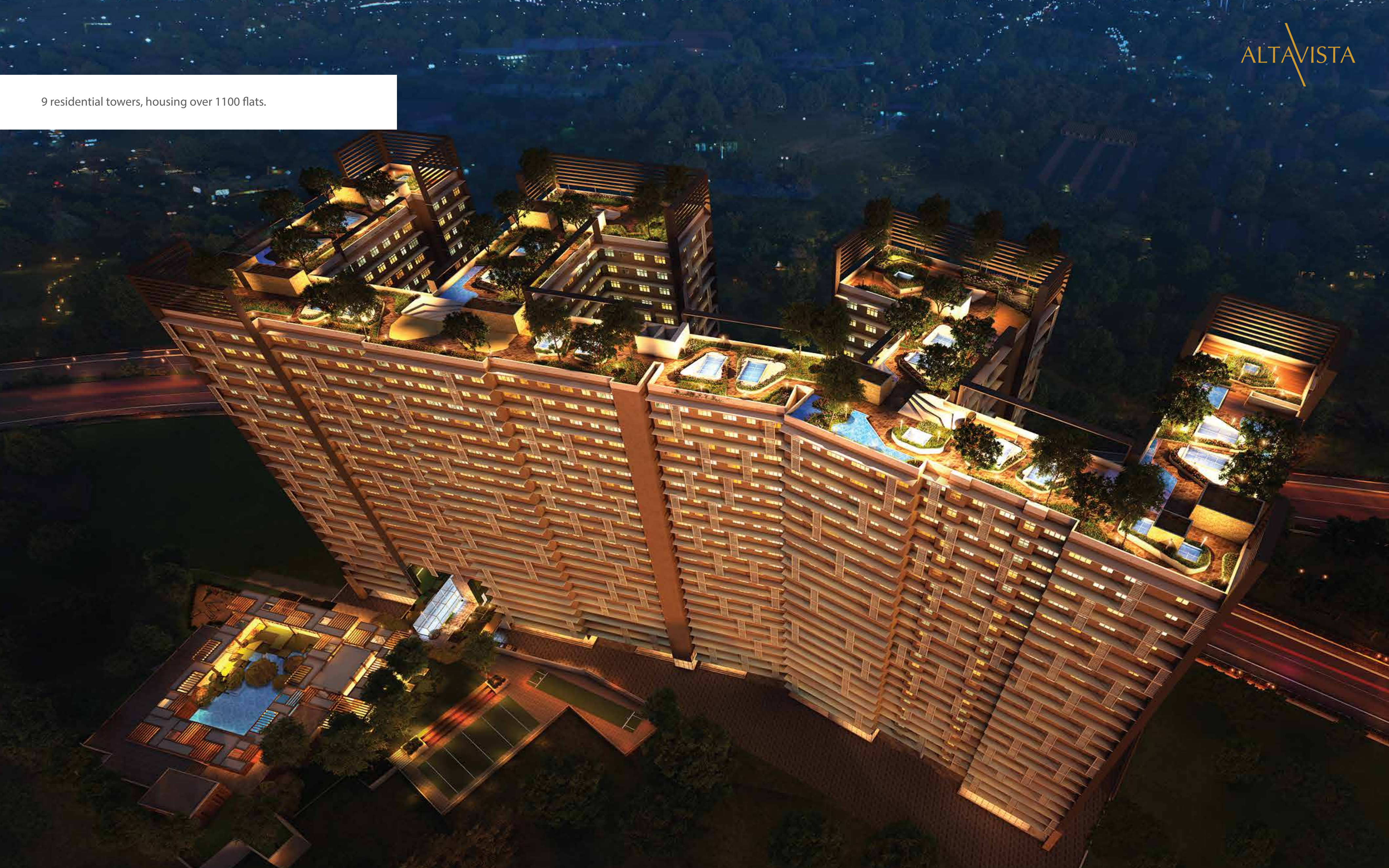
BUILT IN COLLABORATION WITH  
THE MOST DISCERNING ARCHITECT:  
MOTHER NATURE.

01

INTRODUCTION



9 residential towers, housing over 1100 flats.











LEGENDS :-

# LAYOUT PLAN

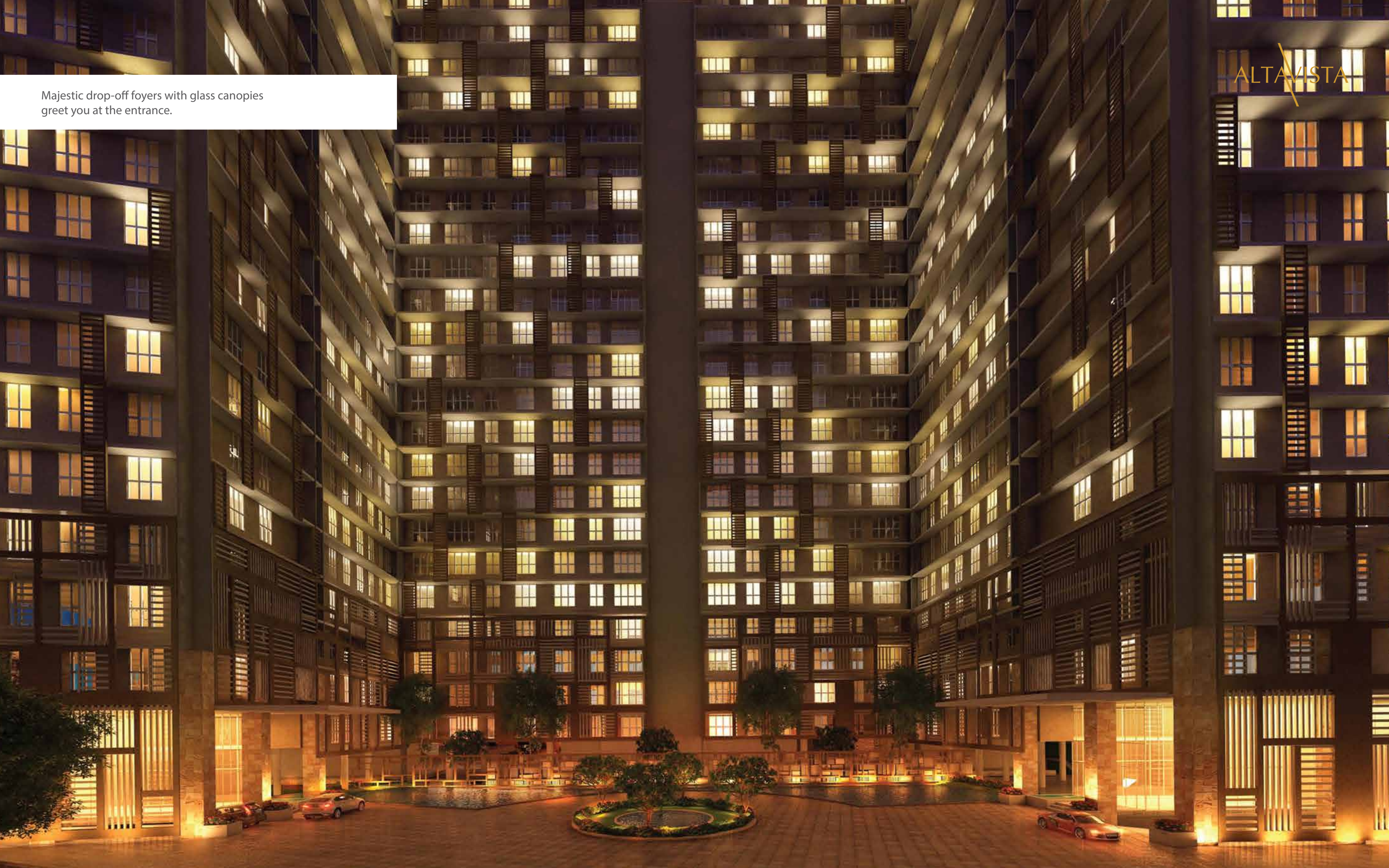


- |                                     |                              |                          |                              |
|-------------------------------------|------------------------------|--------------------------|------------------------------|
| 1. ARRIVAL PLAZA                    | 5. MOUNDS                    | 9. STEPPING STONES       | 13. MAIN POOL                |
| 2. CASCADE WATERFEATURE W/ BUBBLERS | 6. ENTRANCE LOBBY / DROP OFF | 10. LILY POND / BIO POND | 14. PARTY LAWN               |
| 3. REFLECTIVE POOL                  | 7. DRIVEWAY                  | 11. CRICKET PITCH        | 15. KIDS PLAY AREA           |
| 4. FEATURE SCREEN                   | 8. TIMBER DECK               | 12. BASKETBALL HOOP      | 16. OUTDOOR EXERCISE STATION |



Majestic drop-off foyers with glass canopies greet you at the entrance.

ALTA VISTA





Three courtyards open out to the west,  
to let air move freely between structures.





A grand, double-height lobby sets the tone for the rest of the building.





With plush seating and exquisite architecture, the lobby offers the perfect ambience to meet and greet visitors.





PEACE. QUIET. TRANQUILLITY.  
THE THREE-WORD BRIEF WE GAVE  
OUR DESIGNERS.



Premium Italian marble in the living area helps you make a great first impression.



#### Living/Dining

Italian marble flooring • Aluminium powder coated windows • Window frames finished with marble/granite • LG/Samsung or equivalent brand split A/C • Main door with Veneer, teakwood frame and lock. • Video door phone /e-lectrical points for television/phone/lights/fan, etc.



A separate dining area for quiet and cosy family dinners.

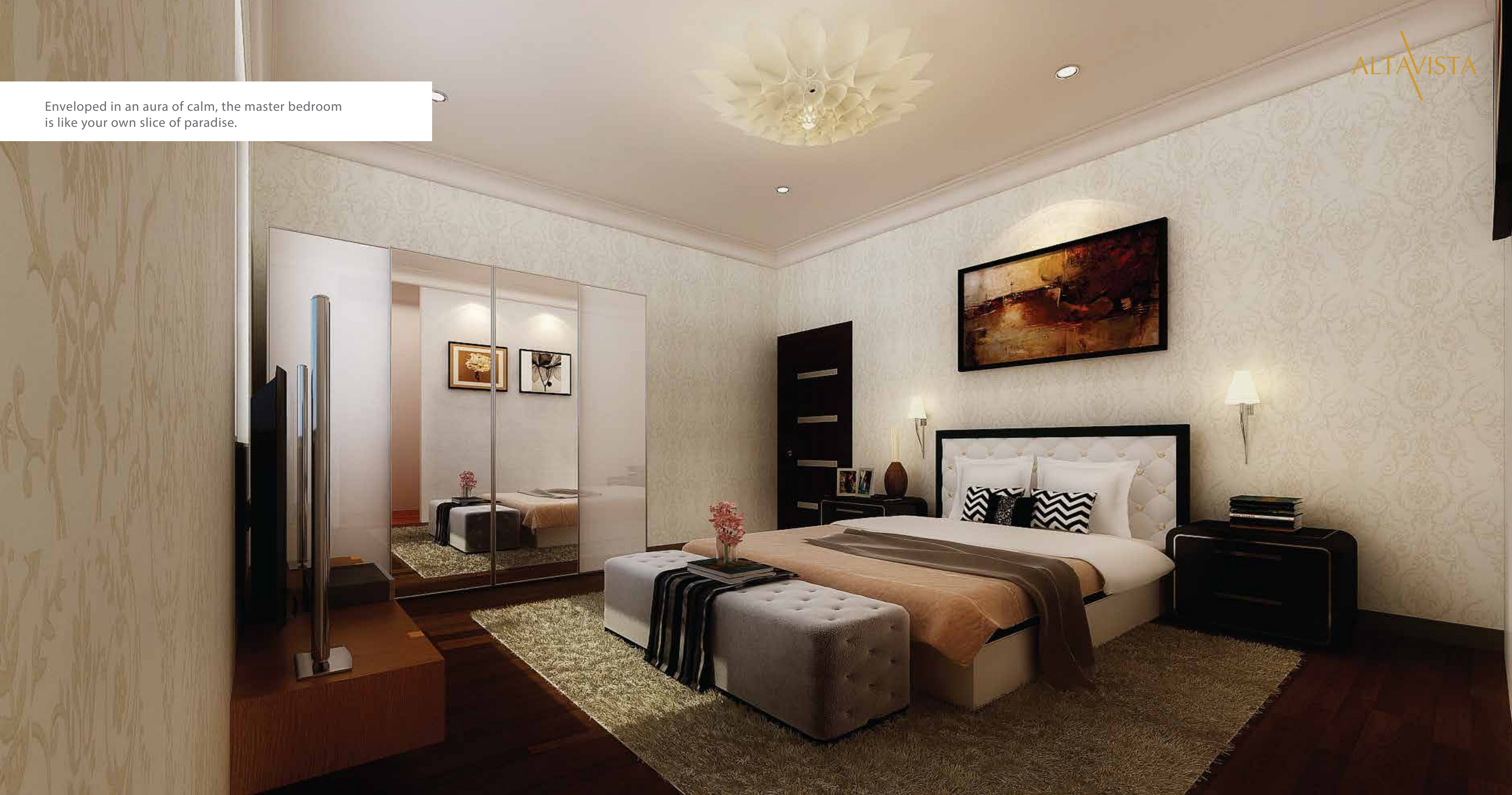


#### Living/Dining

Italian marble flooring • Aluminum powder coated windows • Window frames finished with marble/granite • LG/Samsung or equivalent brand split A/C • Main door with Veneer, teakwood frame and lock. • Video door phone /electrical points for television/phone/lights/fan, etc.



Enveloped in an aura of calm, the master bedroom is like your own slice of paradise.



#### Bedroom

Wooden Flooring for Master Bedroom • Vitrified Tiles Flooring for remaining Bedrooms  
• Flush Doors with laminate • Aluminum Powder Coated Windows • Window Frames finished with Marble/Granite • LG/Samsung or Equivalent Brand Split A/C • Electrical Points for Television/Phone/Lights/Fan etc.



With a highly polished granite counter top, tiles up to 2 ft.high and a stainless steel sink, the kitchen is employs the most contemporary designs and finishes.

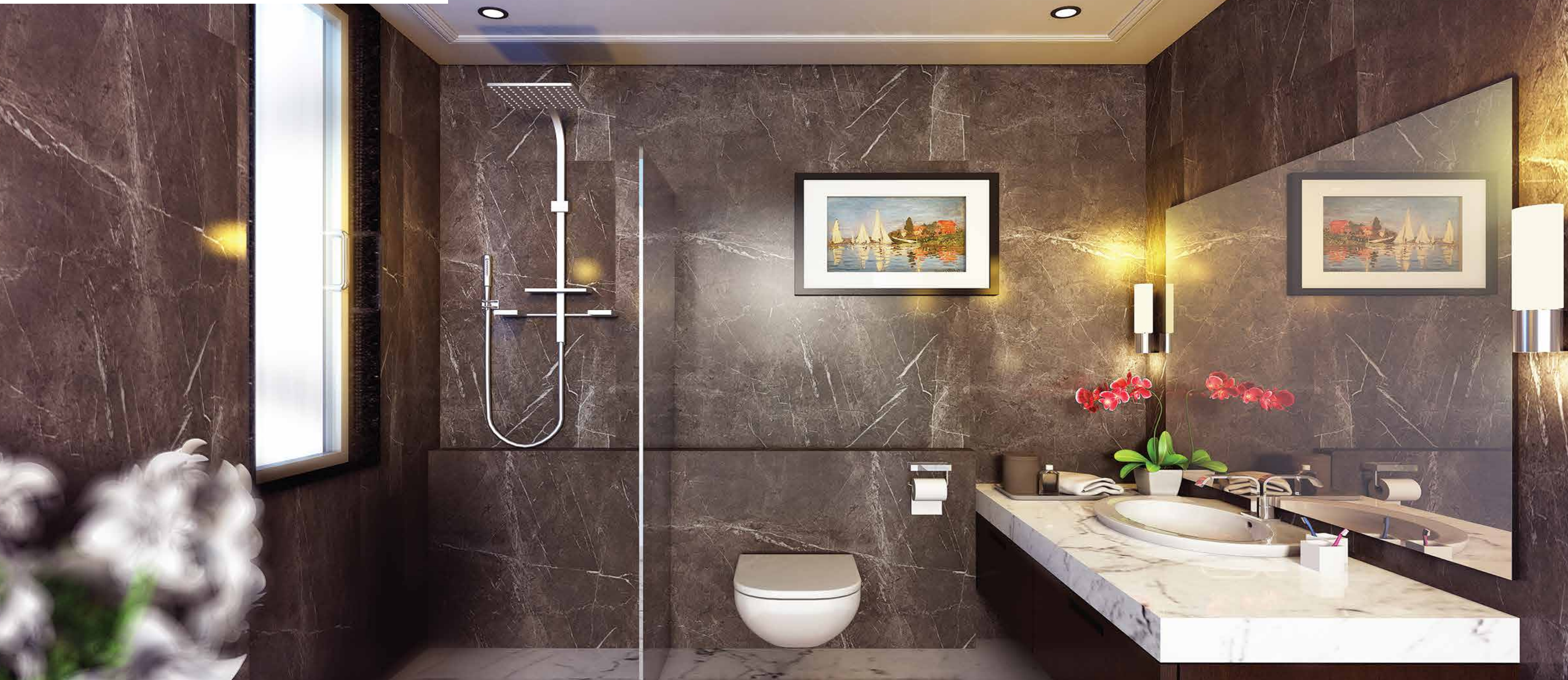


#### Kitchen

Vitrified tiles for flooring • Granite counter top • Modular kitchen • LG/Samsung or equivalent brand refrigerator • LG/Samsung or equivalent brand washing machine • LG/Samsung or equivalent brand microwave oven • Dado tiles above counter top • Stainless steel sink • Exhaust fan • Piped gas • Water purifier



Get the day out your hair in the spa-like environment of your bathrooms.



#### Toilet/Bathroom

Jaguar or equivalent brand C.P. fittings • Koehler/Toto or equivalent brand sanitary ware  
 • Anti-skid tiles for flooring • Dado wall tiles up to ceiling • Geyser • Exhaust fan  
 • Mirror • Cabinet



A 50,000 SQ. FT. CLUBHOUSE,  
A GYM, A SWIMMING POOL AND A CAFE.  
OUT HERE, WEEKEND PLANS  
DON'T NECESSARILY WAIT FOR THE WEEKEND.



**VIVA - THE CLUBHOUSE** Located on an existing hillock, the clubhouse has been designed to integrate with the natural topography of the site, to create an aura of calm and harmony.



#### LIFESTYLE AMENITIES

• Swimming pool with attached kids pool • A fully equipped gym • Steam & sauna • Table tennis • Carom, chess & cards room • Meditation area • Multi-purpose room for dance, aerobics, yoga & zumba • Multi-purpose court



Featuring a well designed garden and a mix of sports and relaxation amenities, the clubhouse offers the perfect spot to recharge or unwind after a long day.





AVALON - THE TERRACE WALK Spread across 35,000 sq.ft., the terrace features jogging tracks that weave through gardens and are surrounded by peaceful mediation cabanas.



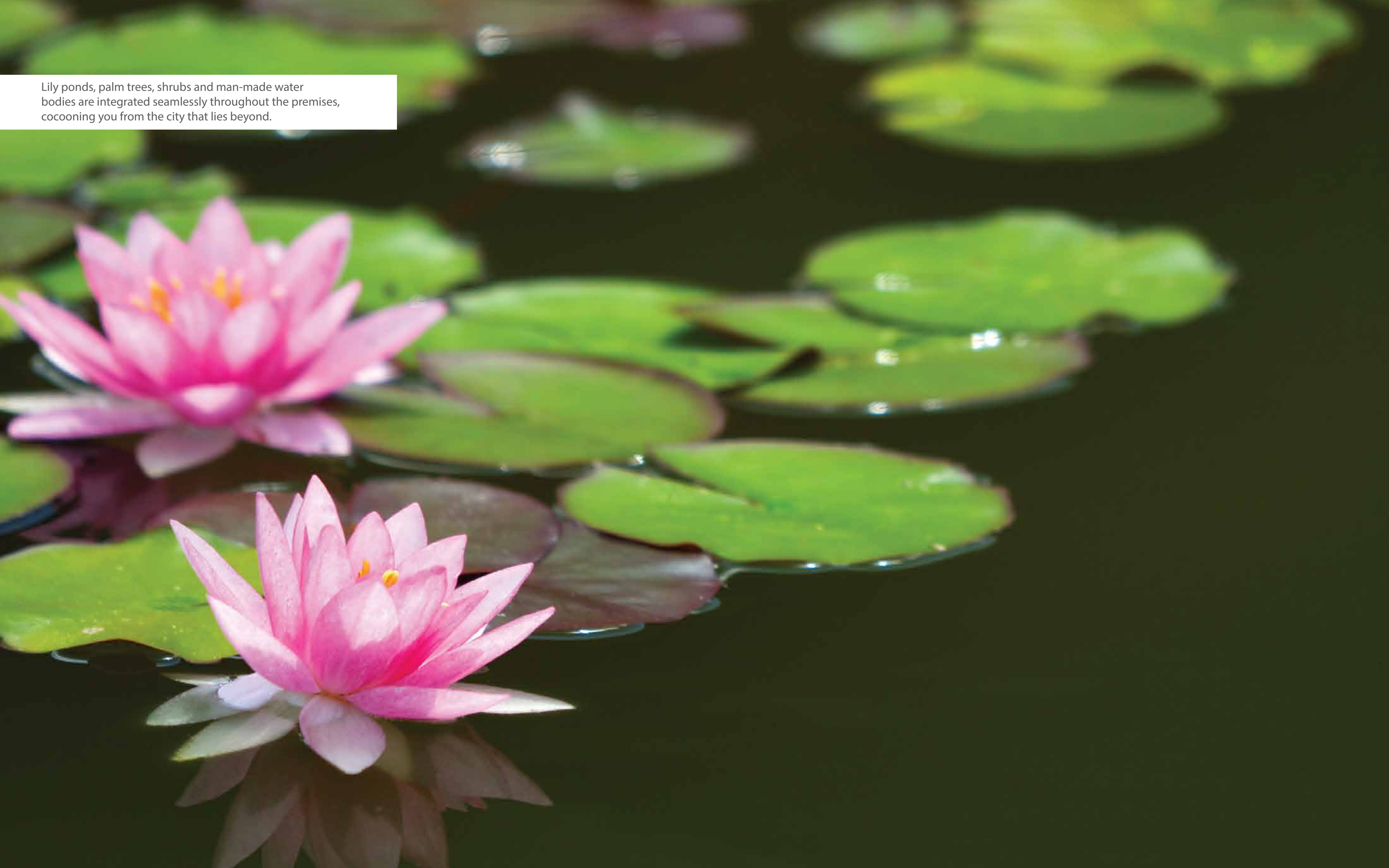


With breathtaking views, the terrace walk gives you more reason to make sure you don't skip your morning workout.





Lily ponds, palm trees, shrubs and man-made water bodies are integrated seamlessly throughout the premises, cocooning you from the city that lies beyond.







#### COMMON AMENITIES

- Golf putting greens • Jogging track • Squash court • Convenience shopping store
- Partylawn with kitchen • Kids' play area • Kids' rockwWall • 24-hour security with CCTV cameras • 24-hour power back-up in common areas • Rain water harvesting • Sewage treatment plant





#### OTHER AMENITIES

Internet Connection from multiple service providers (Wi-Fi) • Television Connection from multiple service providers • Intercom Facilities • High Speed, state of the art elevators  
• Double height entrance lobbies-



LUSH GREEN SPACES.  
OPEN VISTAS. A 'RARE' QUIET.

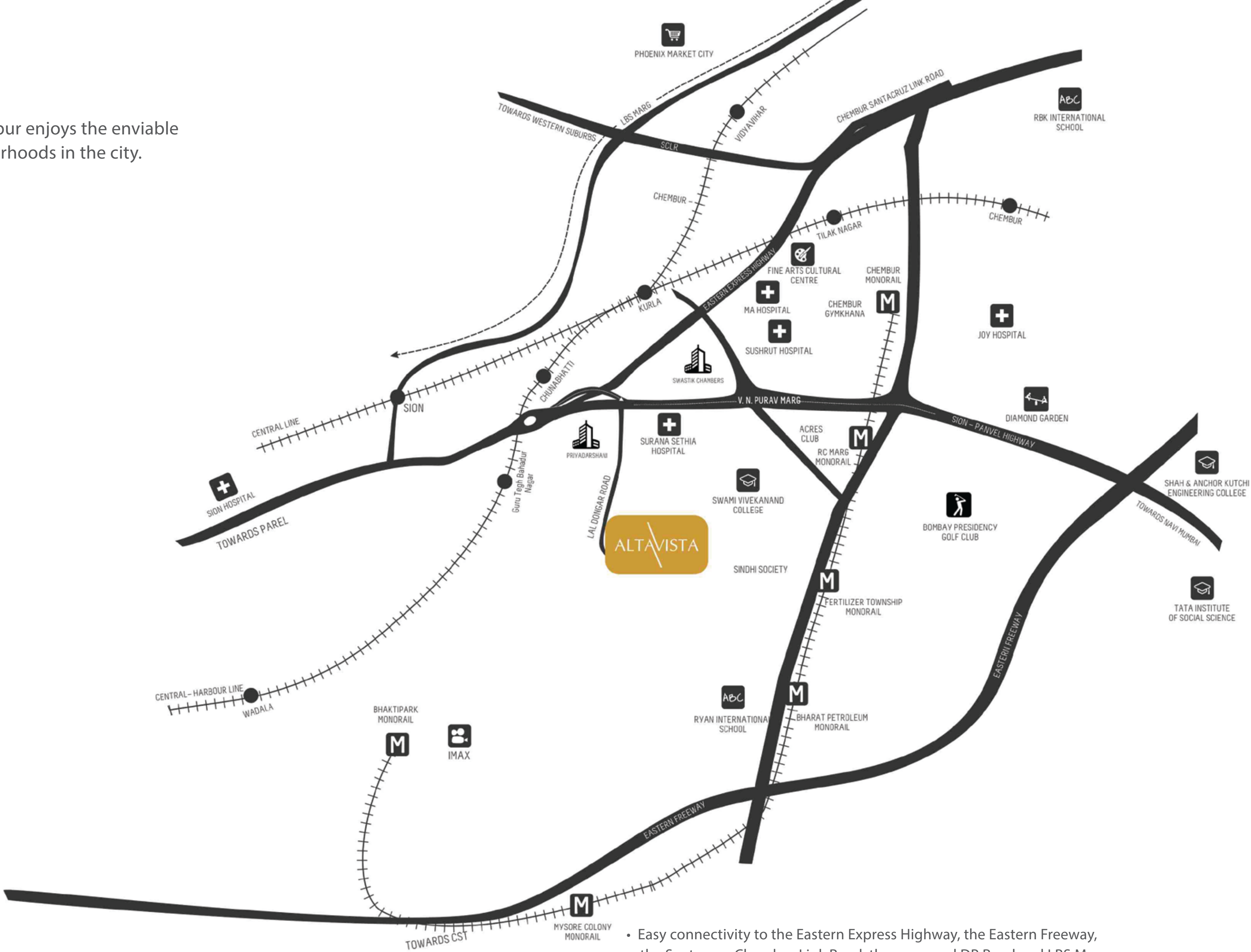
04

THE LOCATION



# Location

A peaceful suburb in eastern Mumbai, Chembur enjoys the enviable status of being one of the greenest neighbourhoods in the city.



- Easy connectivity to the Eastern Express Highway, the Eastern Freeway, the Santacruz-Chembur Link Road, the proposed DP Road and LBS Marg.
- Proximity to the monorail station and the Chembur and Kurla railway stations.
- Surrounded by renowned educational institutions, world-class healthcare facilities, a choice of dining options and one of the city's largest multiplexes.



## ABOUT THE SABARI GROUP

One of the oldest and most reputed construction firms in Chembur, the Sabari Group has over two decades of experience in the construction industry. Over the years, the group has ventured into several residential, commercial and retail projects, earning the trust and respect of its patrons.

The Sabari Group’s commitment to on-time delivery, customer service, maintaining the highest standards of quality and safety, and innovation have made it one of the most successful construction firms in Mumbai today. It is the group’s vision to surpass customer expectations by conducting business in the most transparent manner possible, while providing the most value for money.

## ABOUT SPENTA

Founded in 1989, Spenta is one Mumbai’s leading real estate developers. Under the leadership of Aspan Cooper, a first generation entrepreneur, and Farshid Cooper, an ex-investment banker, the organisation has created and delivered value with the design of every new project.

Over these past 25 years, Spenta has redefined the landscape of south Mumbai, dotting its skyline with landmarks across Forjett Street, Hughes Road, Altamount Road, Walkeshwar, Breach Candy, Tardeo and Mahim.

Today, Spenta’s commitment to excellence and innovation is extending beyond south Mumbai to the suburbs with the redevelopment of certain handpicked projects – one of the many steps we’ve taken towards becoming the most reputed developers in Mumbai.





## Credits

Design Architect:  
Hafeez Contractor

Liaison Architect:  
Pagnis & Pagnis

Landscape Architect:  
Environmental Planning  
Landscape  
Architecture (EPLA)

Structural Consultant:  
Mahimtura Consultants  
Pvt. Ltd.

M.E.P. Consultant:  
Pankaj Dharkar & Associates

Environmental Consultant:  
Ultra-Tech Environmental  
Consultancy & Laboratory

Solicitors:  
Vinod Mistry & Co.  
Vimla & Co.



SITE ADDRESS  
ALTA VISTA  
V N URAV MARG,  
SION – TROMBAY ROAD,  
CHEMBUR (E),  
MUMBAI – 400071

HEAD OFFICE  
304-305,  
RAHEJA CHAMBERS,  
NARIMAN POINT,  
MUMBAI – 400021

REGISTERED OFFICE  
3A/B, RAJABAHADUR MANSION,  
20, AMBALAL DOSHI MARG, FORT,  
MUMBAI – 400023  
PHONE - +91 22 22691166 / 22633388

E-MAIL :- [info@spentacorporation.com](mailto:info@spentacorporation.com)  
WEBSITE :- [www.spentacorporation.com](http://www.spentacorporation.com)